

Roundtable / Dynamics
Upgrading to Dynamics 2.1B

Copyright © 2005 by Ledbetter & Harp LLC

Roundtable® software products are licensed by Tugboat Software Inc. and copyrighted by Ledbetter & Harp LLC, with all rights reserved. This document is also copyrighted and all rights are reserved. This document may not, in whole or in part, be copied, photocopied, translated, or reduced to any electronic medium or machine-readable form without prior consent, in writing, from Tugboat Software or Ledbetter & Harp LLC.

The information in this document is subject to change without notice, and neither Tugboat Software, nor Ledbetter & Harp LLC assume responsibility for any errors that may appear in this document.

April 2005

Roundtable® is a registered trademark of Ledbetter & Harp LLC.

Microsoft Windows is copyrighted by Microsoft Corporation. Microsoft is a registered trademark of Microsoft Corporation. Windows is a trademark of Microsoft Corporation.

PROGRESS is a registered trademark of Progress Software Corporation.

UNIX is a registered trademark of The Open Group in the United States and other countries.

All company and product names are the trademarks or registered trademarks of their respective companies.

Tugboat Software
3300 Irvine Boulevard
Suite 288
Newport Beach, CA 92660-3112

Version: 1.0

Last Updated: April 2005

1	INTRODUCTION	4
2	INSTALLATION PREPARATION	4
2.1	PRE-REQUISITES	4
2.1.1	<i>Roundtable 9.1D05 or higher.....</i>	4
2.1.2	<i>Progress 9.1E</i>	4
2.1.3	<i>Dynamics 2.1B.....</i>	4
3	INSTALLING AND LOADING THE INCREMENTAL PARTNER SITE DEPLOYMENT.....	5
3.1	PARTNER SITE DEPLOYMENT PACKAGES	5
3.2	UPDATING THE 090DYN-DEP RECEIPT WORKSPACE	5
3.2.1	<i>Loading the partner site deployment</i>	5
3.2.2	<i>Populate Workspace.....</i>	11
3.2.3	<i>Upgrading the 090dyn-dep ICFDB database</i>	15
3.2.3.1	Update Schema	15
3.2.3.2	Running the DCU	15
3.2.3.3	Recompiling the workspace	21
3.2.4	<i>Importing changes from 090dyn-dep.....</i>	22
3.2.4.1	Adding the workspace to the new icfconfig21B.xml file	22
3.2.4.2	Updating Workspace Sources.....	23
3.2.4.3	Importing	24
4	APPENDIX A: NEW ROUNDTABLE DEFINITIONS	36
4.1	NEW PRODUCT MODULES	36
4.2	NEW CODE SUBTYPES.....	38
5	TECHNICAL SUPPORT	39
5.1	DYNAMICS SUPPORT	39
5.2	ROUNDTABLE DYNAMICS SUPPORT	39

1 Introduction

This document describes the process of upgrading a Roundtable installation with Roundtable and Dynamics to Progress Dynamics 2.1B. The processes described in this document refer to an upgrade from an environment with Dynamics 2.1A03 to Dynamics 2.1B.

Performing a new installation is not described in this document. The PSDN document describing the installation of Dynamics and Roundtable should be used as a reference instead.

2 Installation preparation

2.1 Pre-requisites

The following product installations are a pre-requisite for the installation and use of the Roundtable Dynamics integration with Dynamics 2.1B:

2.1.1 Roundtable 9.1D05 or higher

The Roundtable Dynamics integration supported by Tugboat Software requires that Roundtable 9.1D and patch 9.1D05 have been installed.

Roundtable 9.1C has not been tested with this release of Dynamics, and it is not supported by Tugboat Software.

The steps for upgrading a Roundtable installation and Roundtable repository to 9.1D are not included in the upgrade document. Please refer to the installation notes available from the Roundtable website.

2.1.2 Progress 9.1E

Dynamics 2.1B requires that Progress 9.1E is installed and used during and after the upgrade to this release of Dynamics.

2.1.3 Dynamics 2.1B

The Roundtable Partner Site deployment package described in this document contains a copy of the commercial Progress Dynamics 2.1B code. This code is limited to the code needed to make a workspace complete enough for application development with Dynamics as a part of the application.

There are some other files included in the commercial CD installation of Dynamics 2.1B from Progress Software. It is therefore important that this has been installed separately prior to performing this upgrade.

3 Installing and loading the incremental partner site deployment

3.1 Partner site deployment packages

The Roundtable Partner Site Deployment packages provided for Dynamics 2.1B consist of 2 packages:

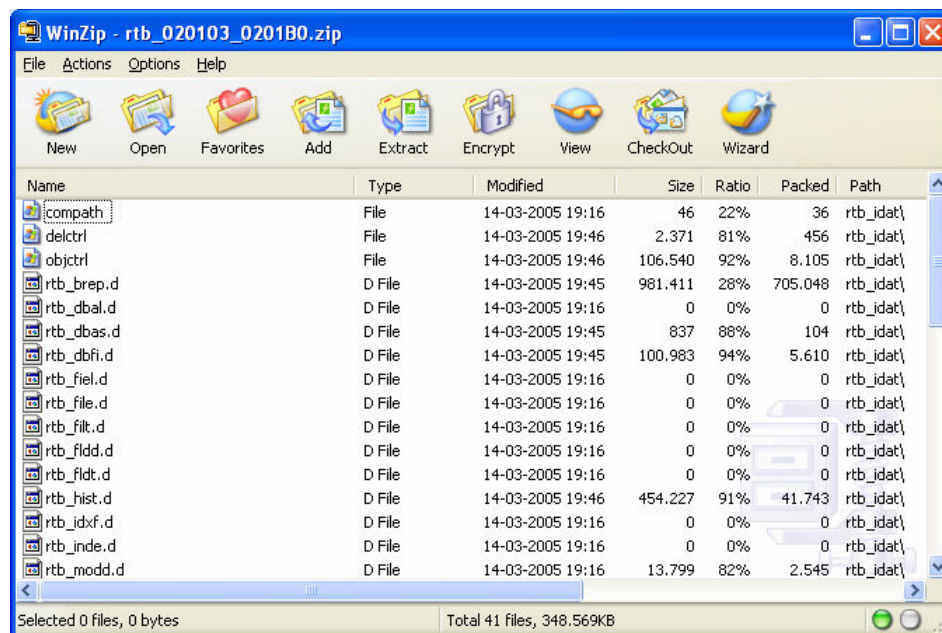
1. An incremental deployment package for upgrading from Dynamics 2.1A03 to Dynamics 2.1B. This deployment is provided as a .zip file with the name: **rtb_020103_0201B0.zip**
2. A full partner site deployment package for creating a new full Dynamics 2.1B Roundtable environment. This deployment is provided as a .zip file with the name: **rtb_0201B0.zip**

NOTE: Both of the .zip files with the partner site deployment only contain the contents of the rtb_* directories from the deployments. They do not contain the files that were generated from the deployment. This has been done intentionally to reduce the download size of the .zip files. The contents of the workspaces contained in these .zip files can be extracted from the updated RTB repository using the Populate Workspace functionality in Roundtable.

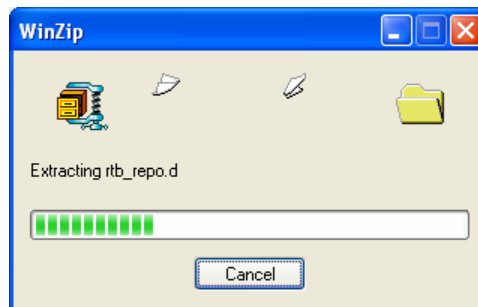
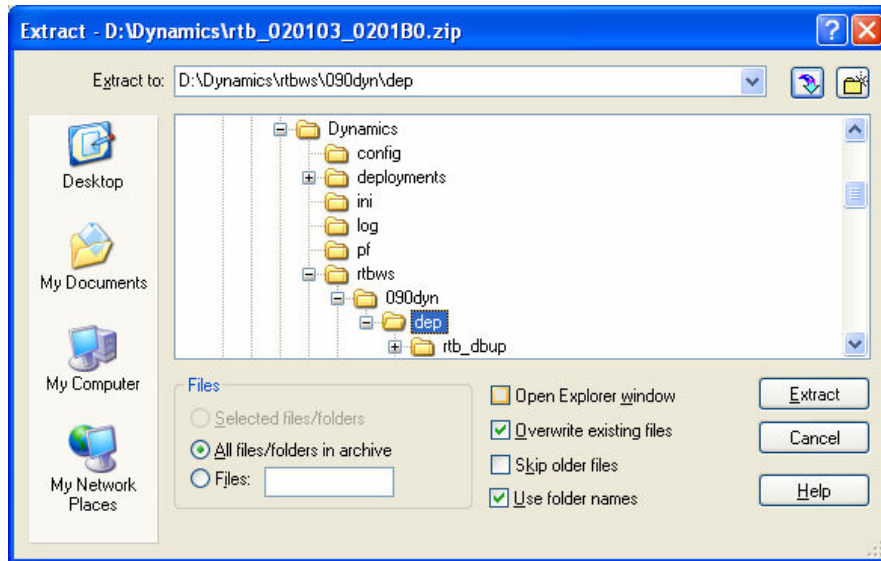
3.2 Updating the 090dyn-dep receipt workspace

3.2.1 Loading the partner site deployment

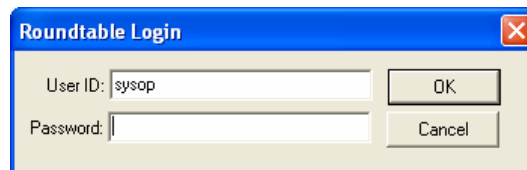
1. Locate the correct .zip file with the incremental partner site deployment and open it in WinZip or an equivalent tool.



2. Unzip the contents of the .zip file to the root of the 090dyn-dep workspace (e.g. D:\Dynamics\rtbws\090dyn\dep).



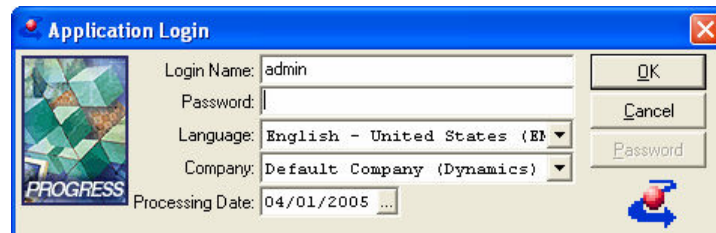
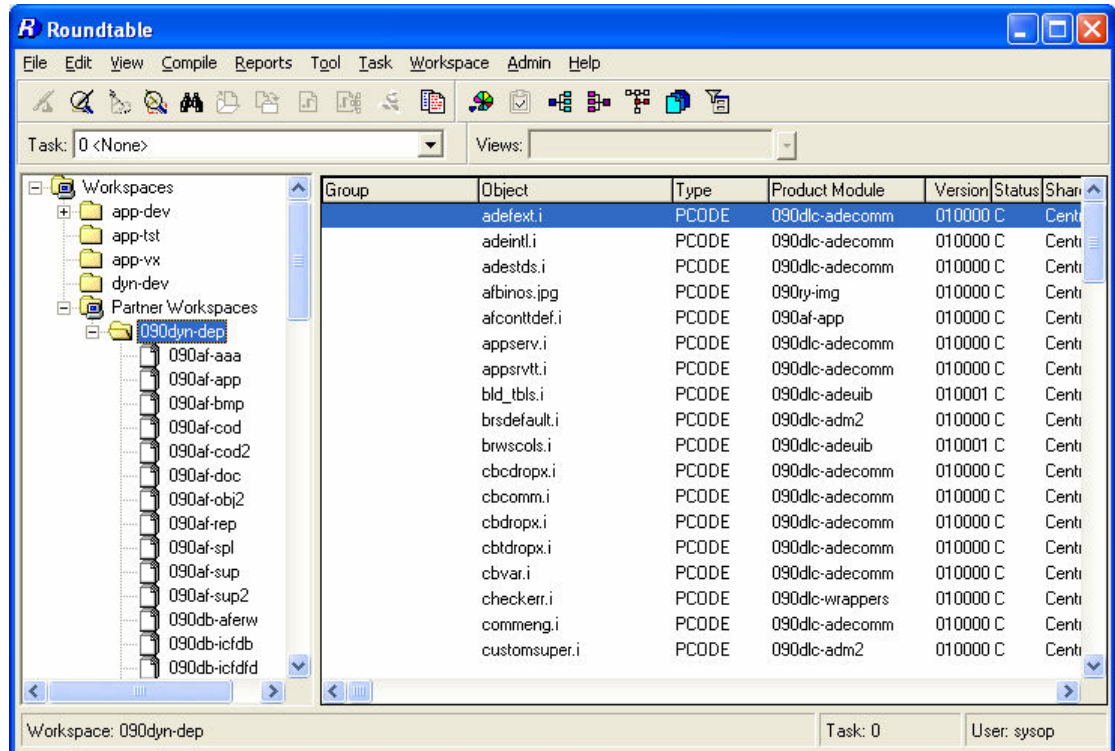
3. Once the package has been unpacked, start Roundtable and log in as the sysop user.



4. **Select the 090dyn-dep workspace** and log in to the Dynamics environment.

This workspace should be a fully functional workspace where the default version of Dynamics can be run and used as a reference.

The reason for selecting this workspace before the Partner Site Replication is to **ensure that the date format and numeric formats are correctly set** for the session when loading the partner site data.

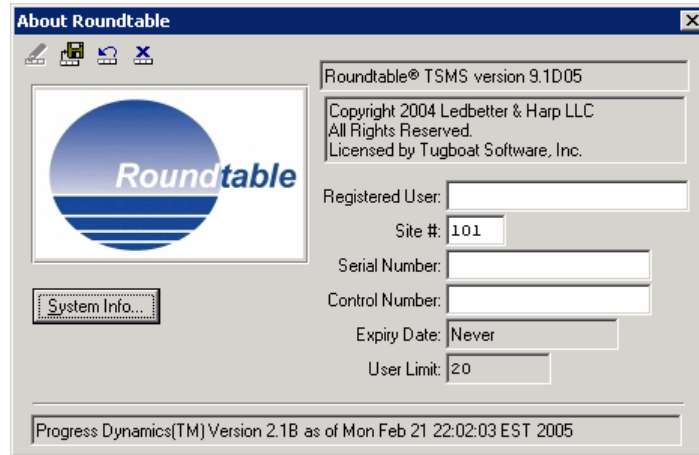


5. Change the RTB site number

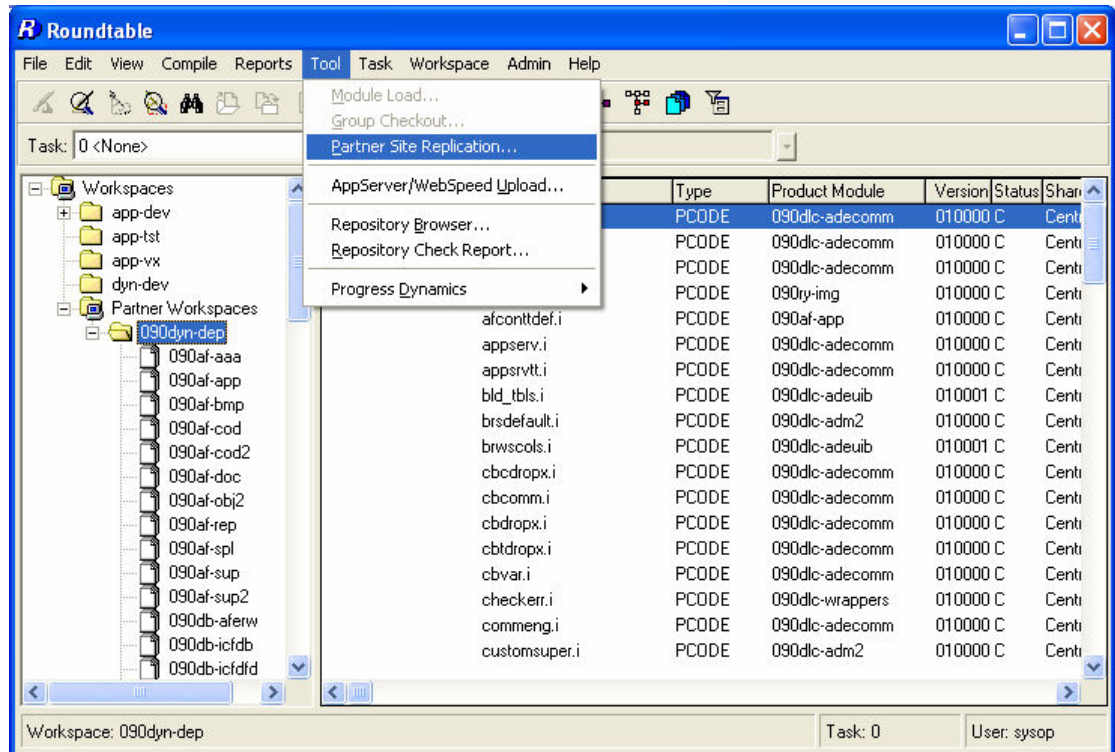
If the RTB site number is 000, then this should be temporarily changed prior the Partner Site Replication.

This is necessary as there are new Code Subtype definitions added to the repository for this release. These will not be loaded into the RTB repository if the site number is 000.

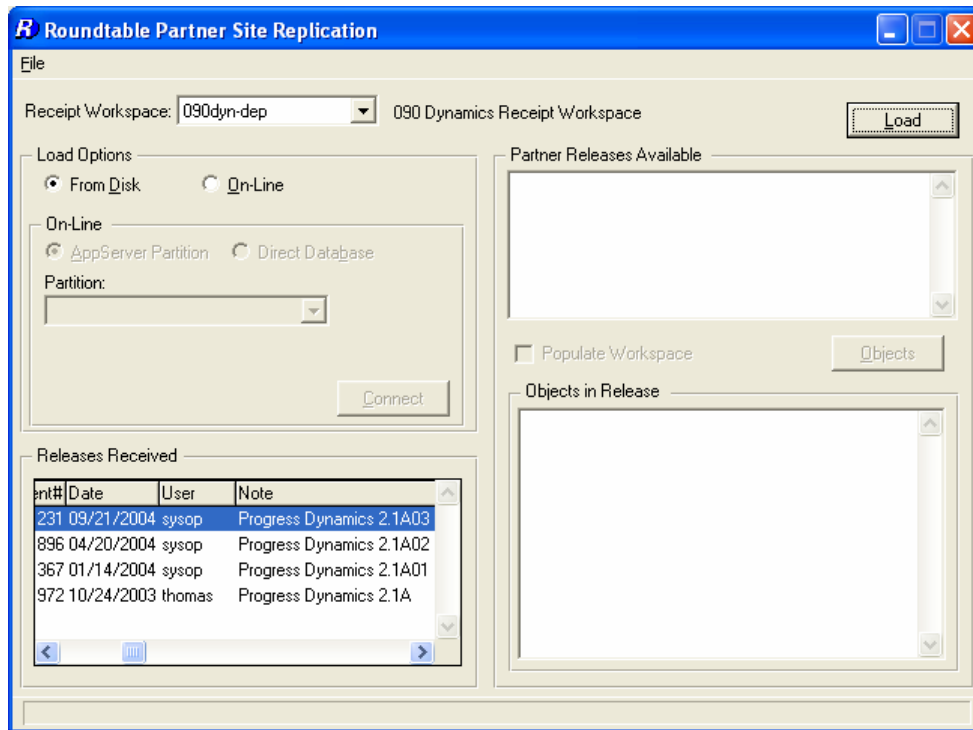
Set the site number to 101.



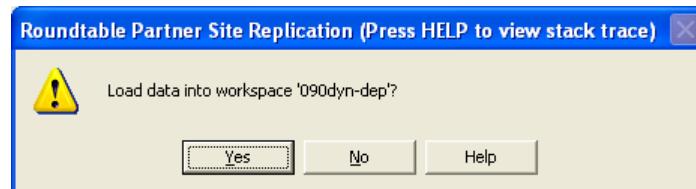
6. Select Tool → Partner Site Replication.



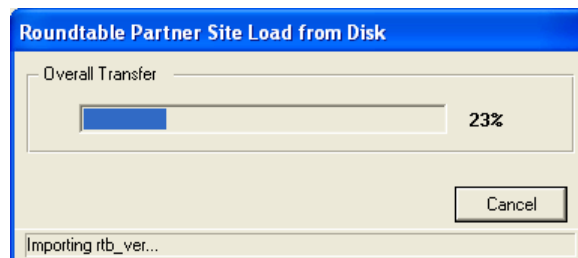
7. Select the 090dyn-dep workspace and the Load option “From Disk”. Press the Load button.



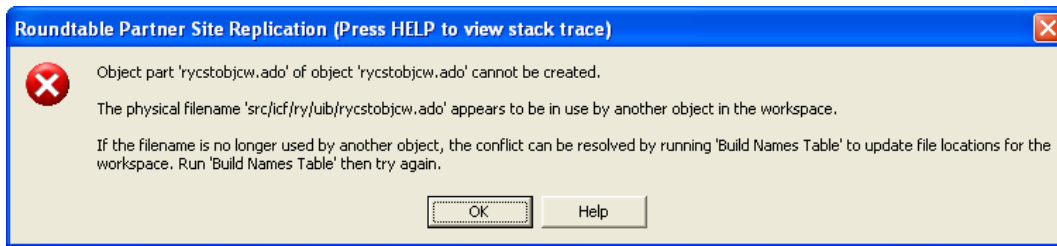
8. Answer yes to the following question



9. The Partner Site Replication is now started.

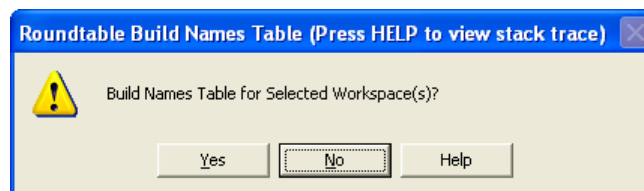
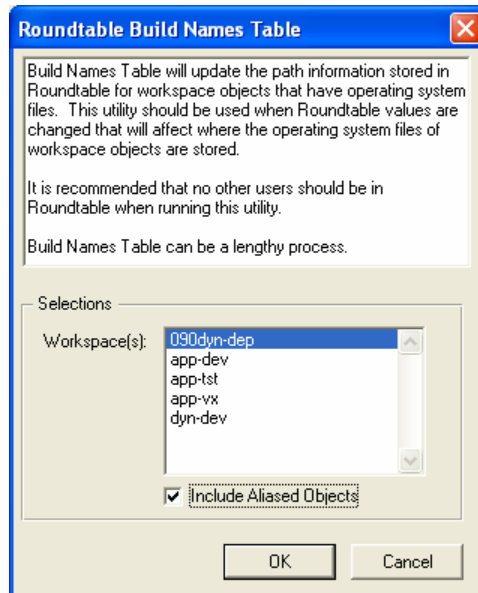


10. At the end of the Partner Site Replication the error shown below may come up:



This error occurs because the static **rycstobjcw.w** has been deleted in the Dynamics 2.1B package, and a new dynamic object with the name **rycstobjcw.ado** has been created in the same release. This causes problems with the object part names table in the Roundtable repository.

11. In order to resolve this issue, run the Build Names Table function in Roundtable.

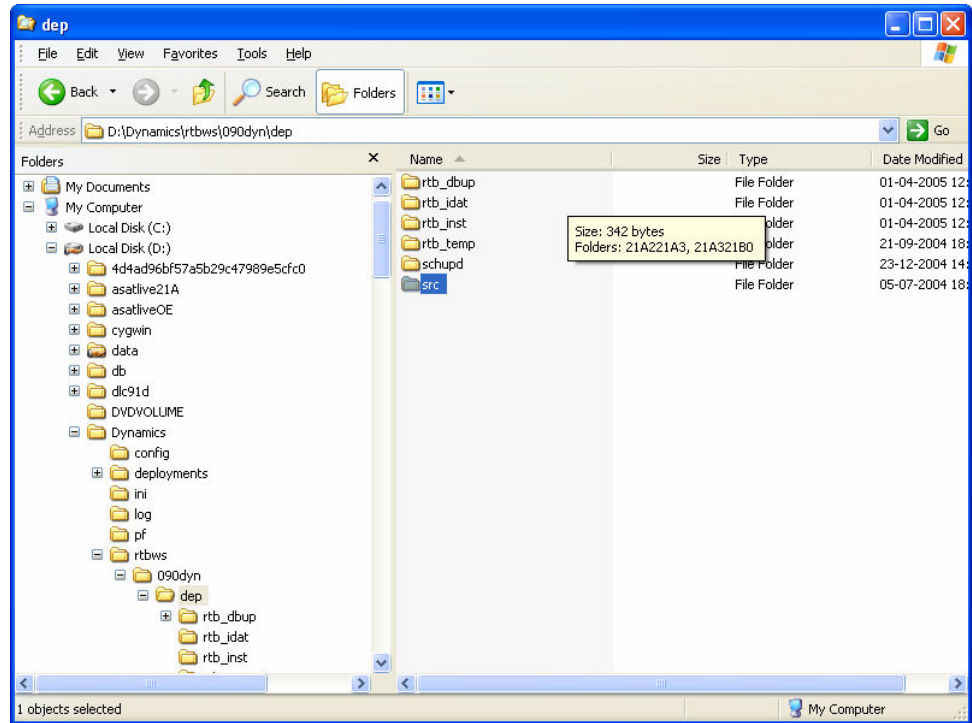


12. To be absolutely sure that all of the partner data has been correctly loaded into the repository, it is recommended that the Partner Site Replication is re-run after Build Names table has been run.

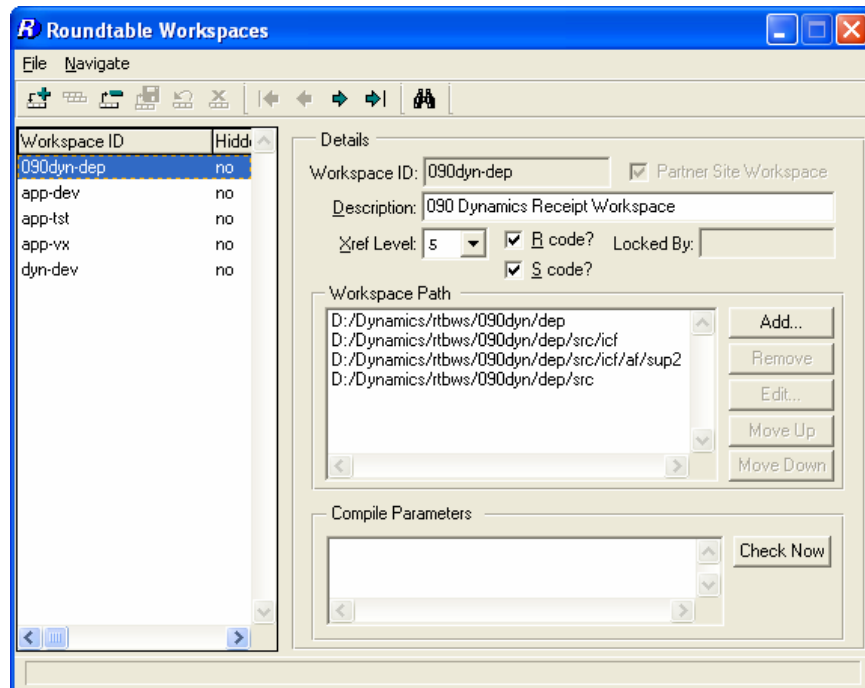
3.2.2 Populate Workspace

Once the Partner Replication has completed, the files on disk for the workspace have to be updated.

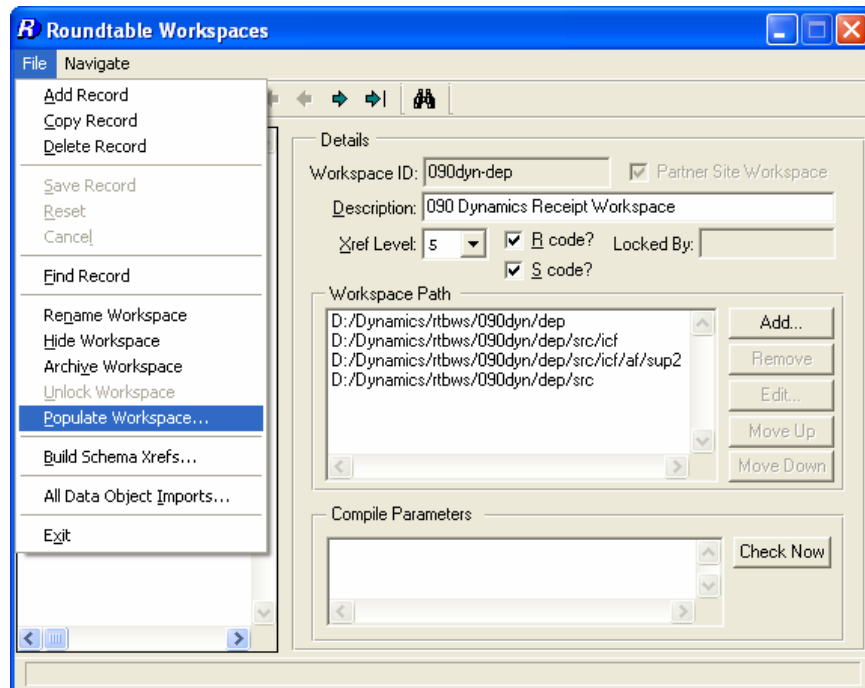
1. **Delete the source contents of the 090dyn-dep workspace.** To make sure that deleted objects that are no longer part of the 090dyn-dep workspace, the following sub-directories for the workspace should be deleted:
 - a. <090dyn-dep workspace root>\src



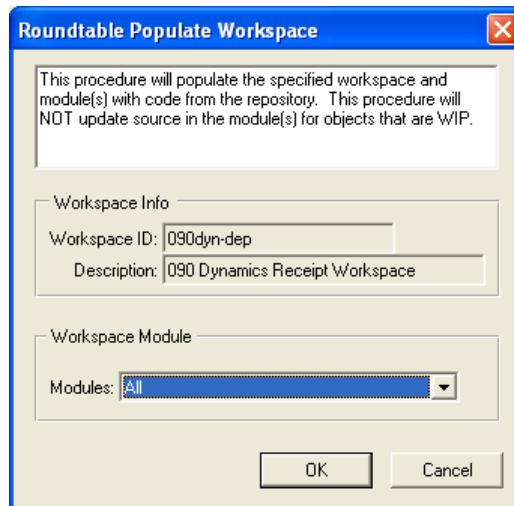
2. Start the **Workspace Maintenance**.



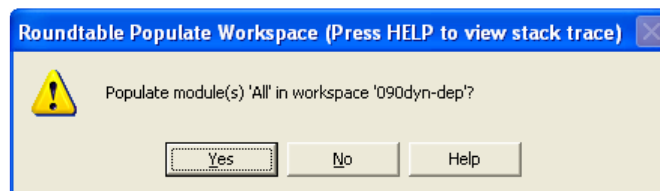
3. Select the **090dyn-dep** workspace, and select **Populate Workspace** from the File menu.



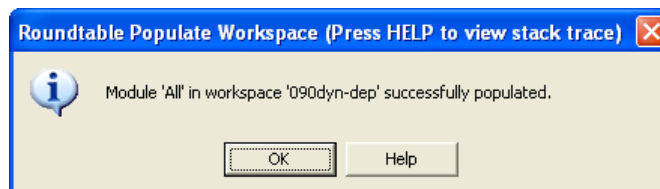
4. Select “All” modules and press **OK**.



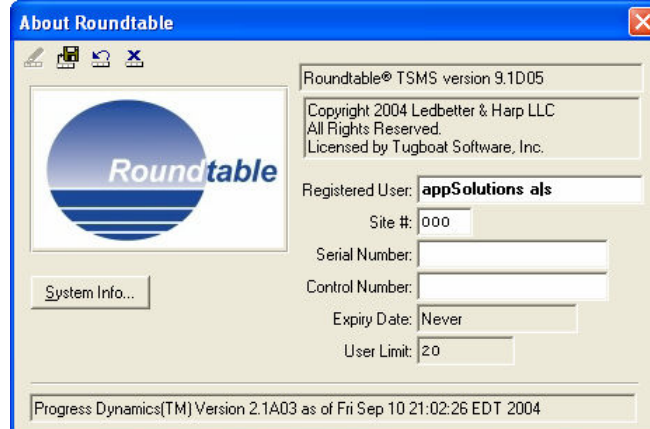
5. Select **Yes**.



6. When the Populate Workspace is completed select **OK**.



7. Once the Populate Workspace is completed, remember to reset the Roundtable Site number back to 000 if it was changed at the start of the upgrade process.



1. When the source code for the workspace has been regenerated, the ICFDB database must be updated and the contents of the workspace recompiled. This should be done using the Dynamics Configuration Utility (DCU).

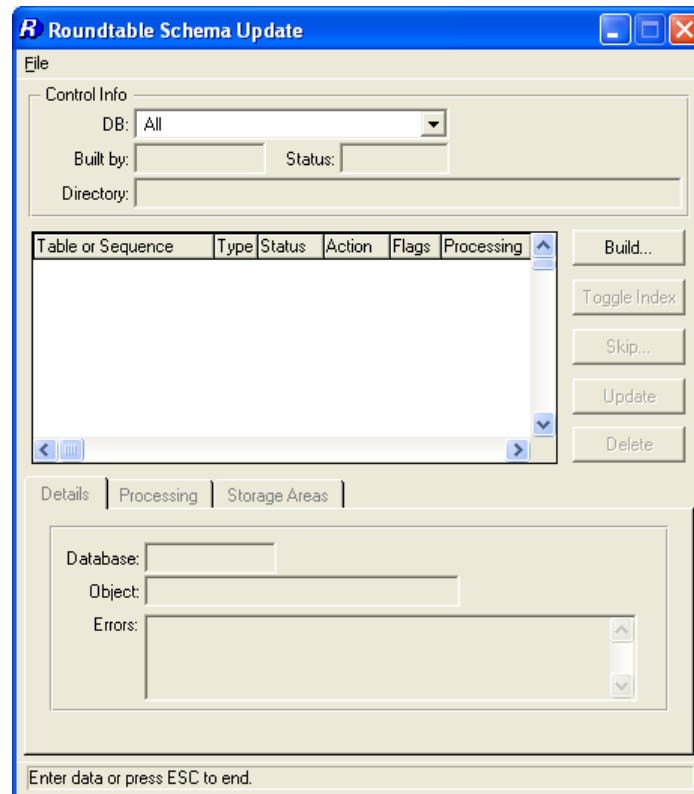
3.2.3 Upgrading the 090dyn-dep ICFDB database

The ICFDB database for the 090dyn-dep workspace needs to be updated with the DCU from Dynamics 2.1B.

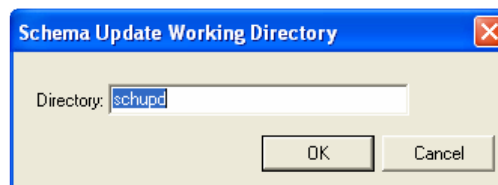
3.2.3.1 Update Schema

There are schema changes included in the partner site deployment. These schema changes have to be “applied” to the receipt workspace. This is necessary even though Roundtable is not being used to update the schema of the workspace database with the Roundtable Dynamics integration.

Select Workspace → Update Schema

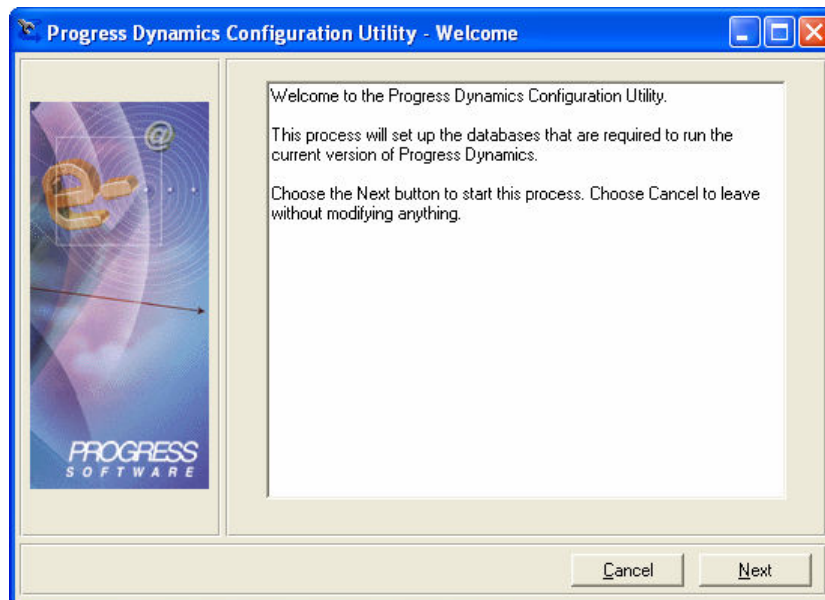
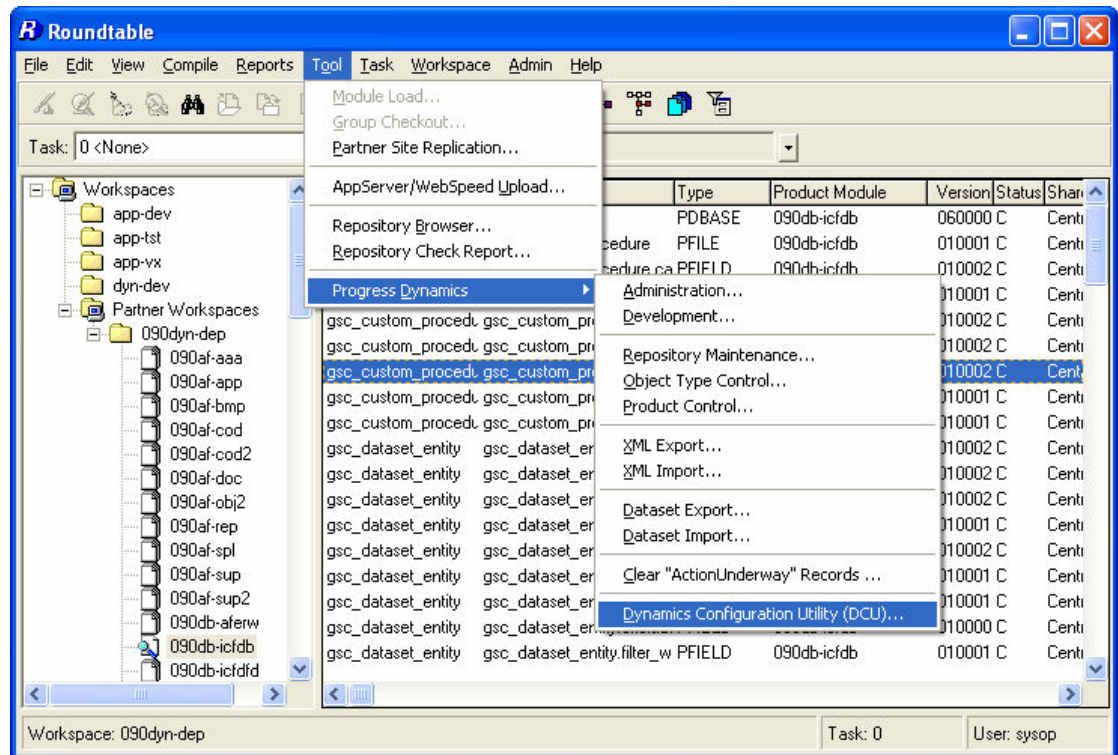


Press **Build**

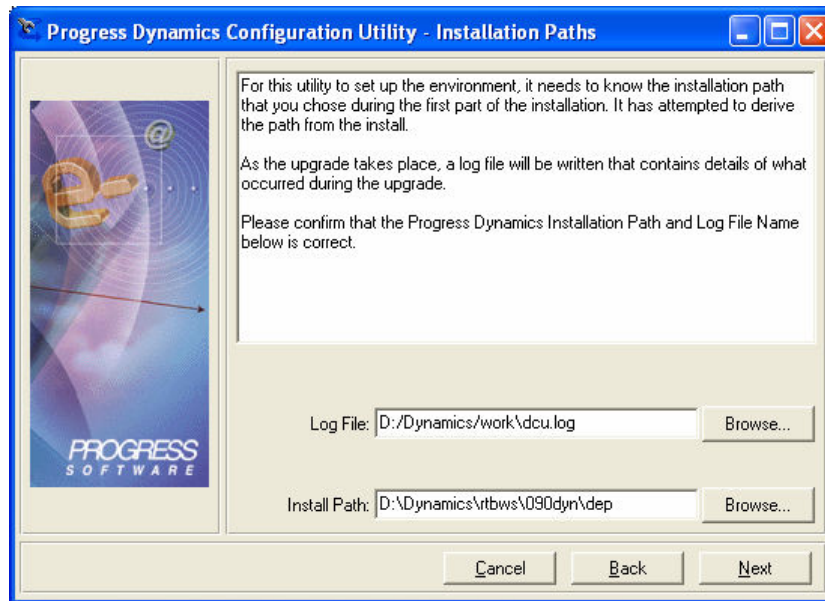


3.2.3.2 Running the DCU

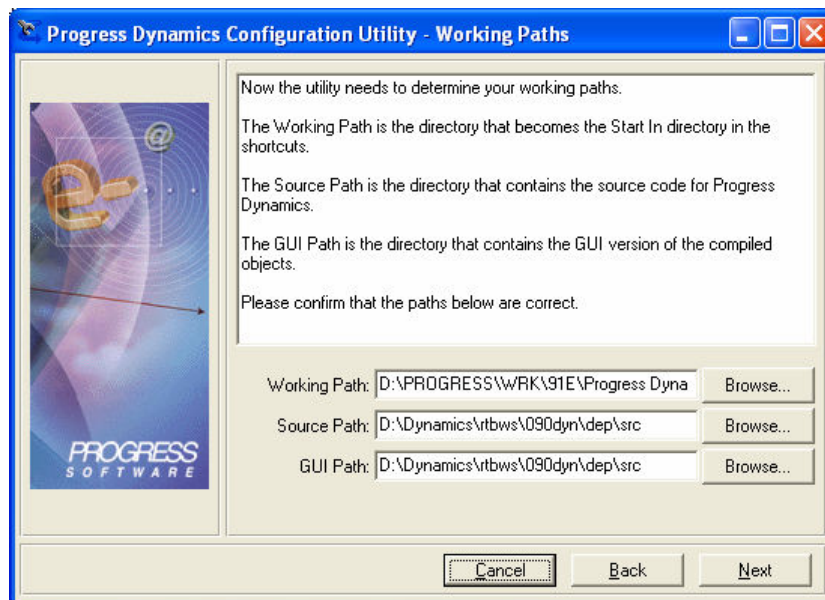
Start the DCU from Tool → Progress Dynamics → Dynamics Configuration Utility (DCU)



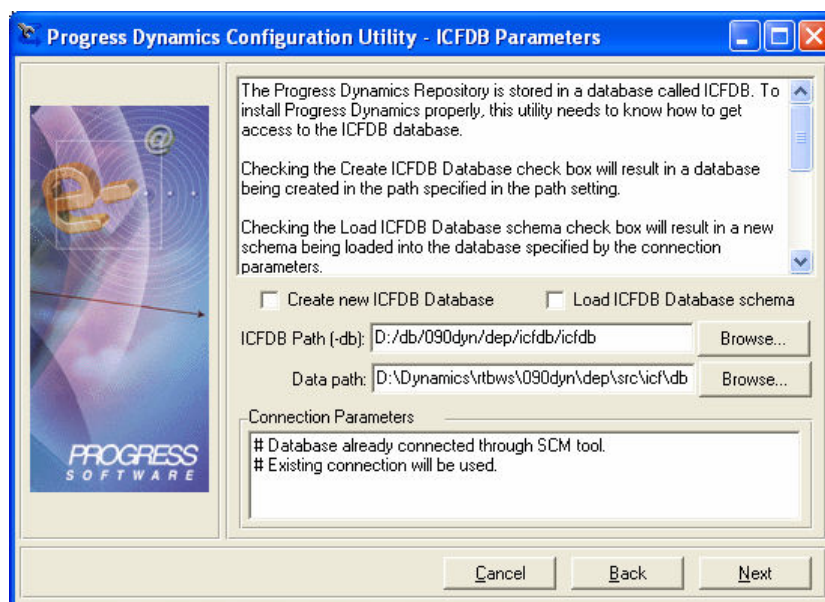
Change the Install Path to be the root path of the 090dyn-dep workspace.



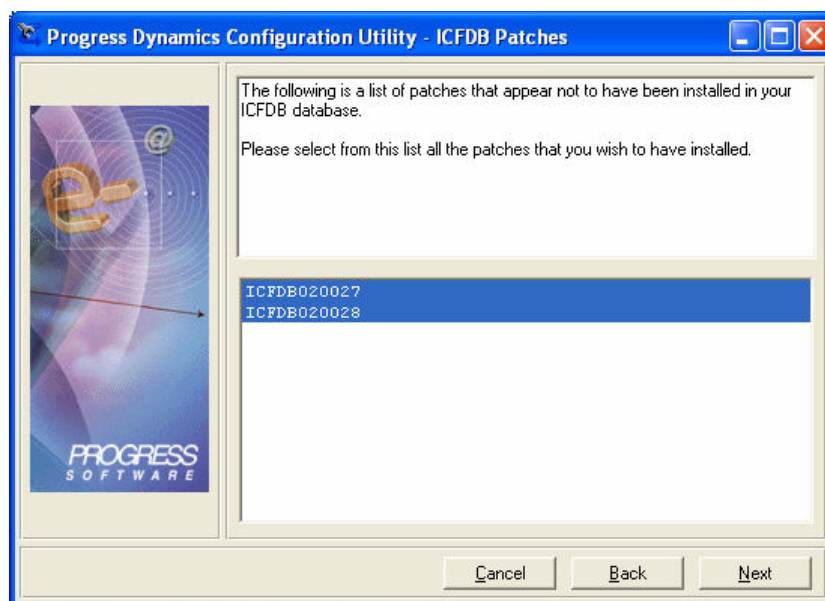
Change the GUI Path to be the same as the Source Path.



The database connection to the ICFDB database is automatically picked up from the set in the database connection screen.



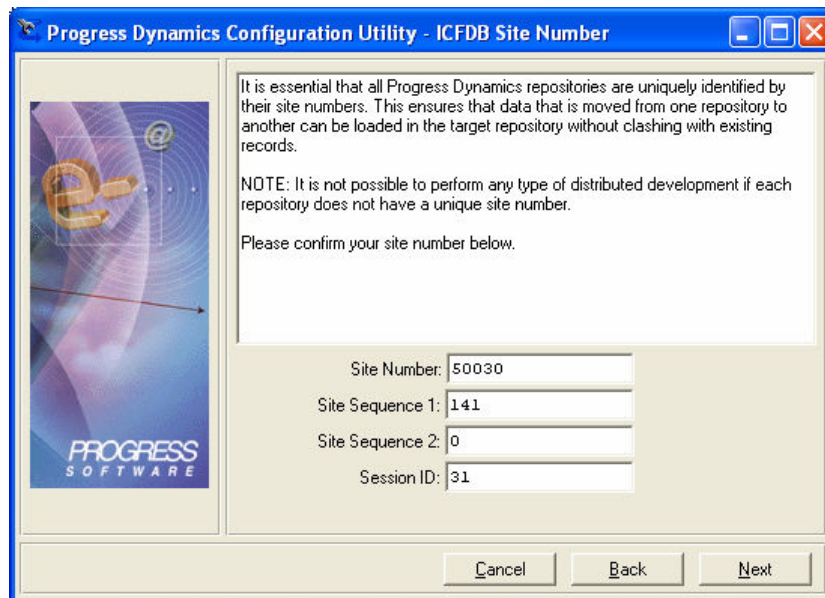
The next screen shows the patch levels that will be applied to the ICFDB database.



NOTE: For this particular update, **these patches do not contain any actual schema changes**. They just result in the database version sequence for the database being updated to the correct level and ado file load information being loaded into the ICFDB repository.

This is because there are no schema changes between Dynamics 2.1A03 and Dynamics 2.1B.

The next screen shows ICFDB site number details. These do not need to be changed.



Progress Dynamics Configuration Utility - ICFDB Site Number

It is essential that all Progress Dynamics repositories are uniquely identified by their site numbers. This ensures that data that is moved from one repository to another can be loaded in the target repository without clashing with existing records.

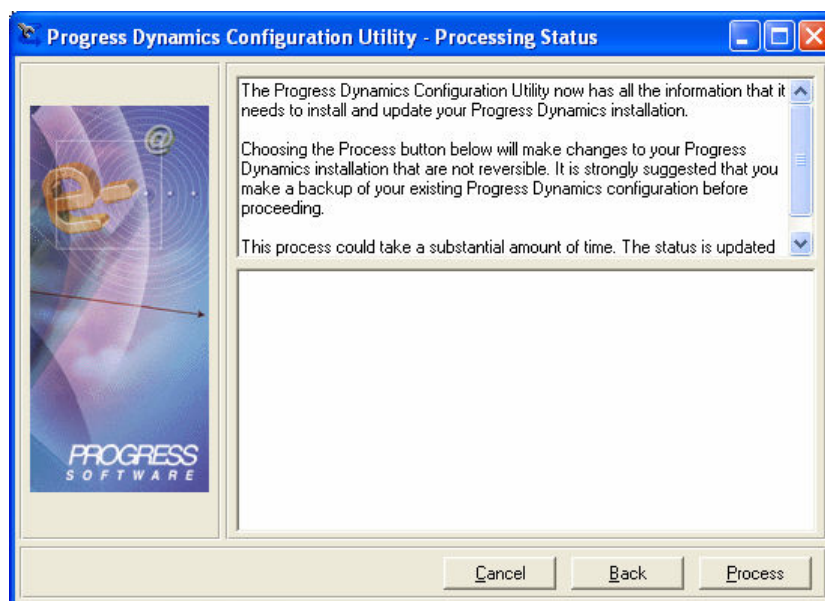
NOTE: It is not possible to perform any type of distributed development if each repository does not have a unique site number.

Please confirm your site number below.

Site Number: 50030
Site Sequence 1: 141
Site Sequence 2: 0
Session ID: 31

Cancel Back Next

Press **Process** to start the update process.



Progress Dynamics Configuration Utility - Processing Status

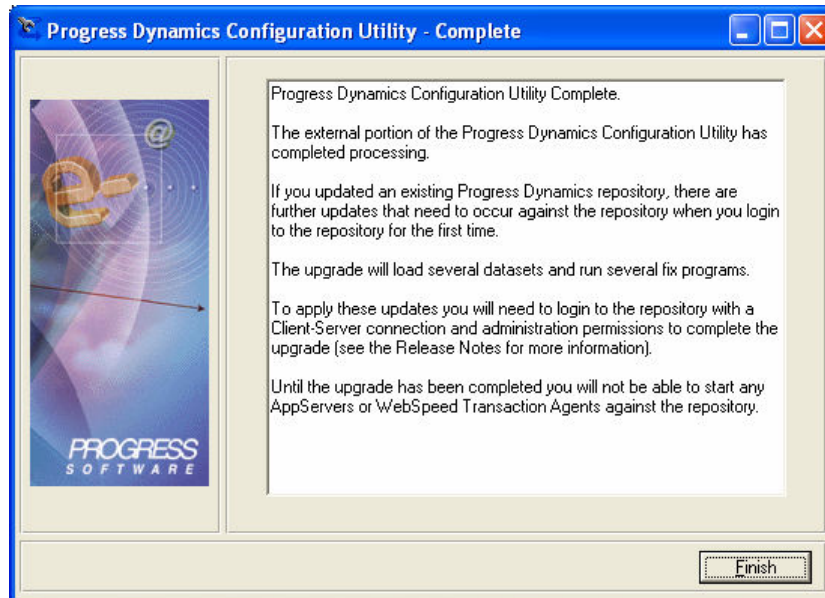
The Progress Dynamics Configuration Utility now has all the information that it needs to install and update your Progress Dynamics installation.

Choosing the Process button below will make changes to your Progress Dynamics installation that are not reversible. It is strongly suggested that you make a backup of your existing Progress Dynamics configuration before proceeding.

This process could take a substantial amount of time. The status is updated

Cancel Back Process

When the DCU has completed doing the update (this will be a very fast update and only takes a few seconds) press **Finish**.



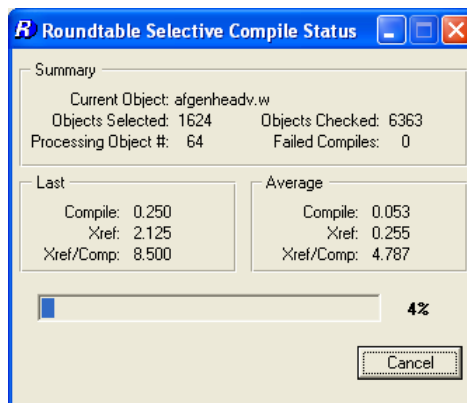
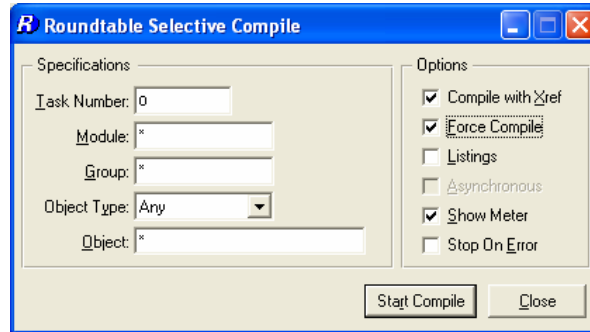
Reselect the 090dyn-dep workspace and login in as the admin user. This will launch the second stage of the DCU.

The second stage of the DCU loads a number of .ado files into the ICFDB database.

When this load is complete, the ICFDB repository for 090dyn-dep update is complete.

3.2.3.3 Recompiling the workspace

Recompile the entire workspace using the **Selective Compile** utility and doing a full forced compile.



3.2.4 Importing changes from 090dyn-dep

Now that the partner site deployment has been loaded and processed in the 090dyn-dep workspace it is time to import these changes into the next workspace in the flow.

The following example will show how to update a workspace called *dyn-dev* from Dynamics 2.1A03 to Dynamics 2.1B.

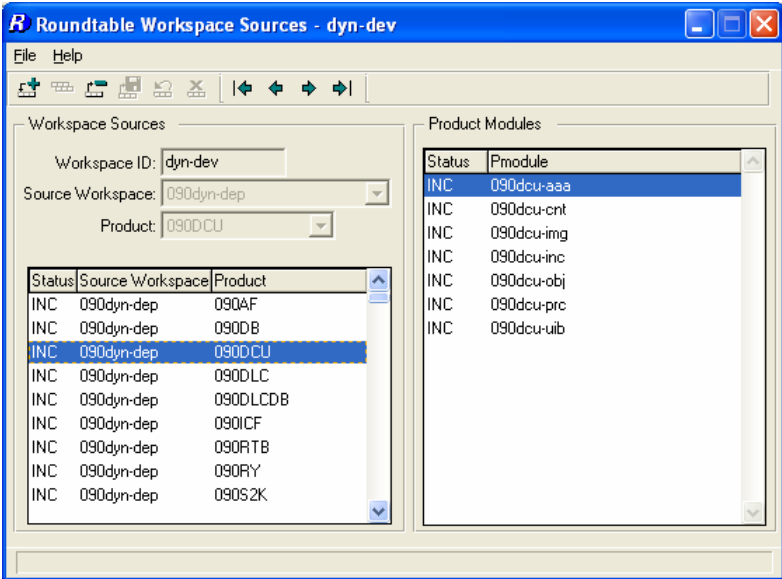
3.2.4.1 Adding the workspace to the new icfconfig21B.xml file

3.2.4.2 Updating Workspace Sources

The new product modules that have been added to the Products in the repository are not automatically updated in the workspace sources for the workspaces. This has to be done manually.

The following **IN**cluded products have to be deleted and re-added to the workspace:

090DCU



R Roundtable Workspace Sources - dyn-dev

File Help

Workspace Sources

Workspace ID: dyn-dev

Source Workspace: 090dyn-dep

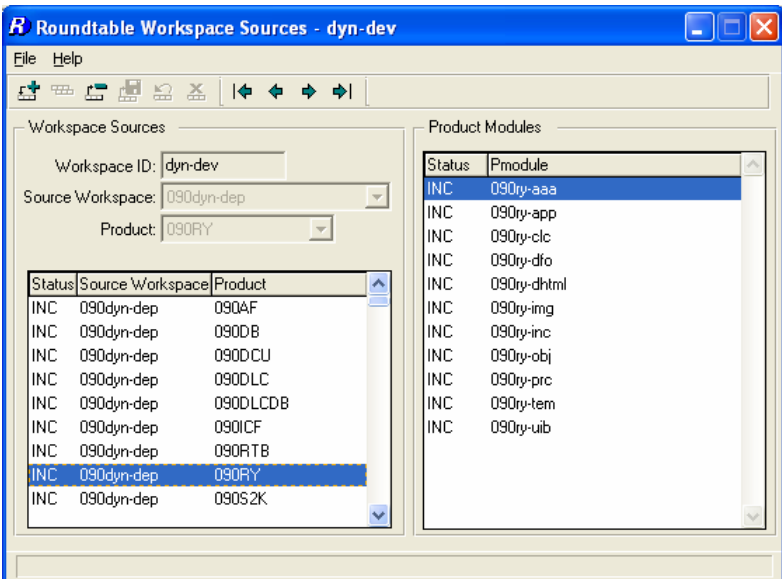
Product: 090DCU

Status	Source Workspace	Product
INC	090dyn-dep	090AF
INC	090dyn-dep	090DB
INC	090dyn-dep	090DCU
INC	090dyn-dep	090DLC
INC	090dyn-dep	090DLCDB
INC	090dyn-dep	090ICF
INC	090dyn-dep	090RTB
INC	090dyn-dep	090RY
INC	090dyn-dep	090S2K

Product Modules

Status	Pmodule
INC	090dcu-aaa
INC	090dcu-cnt
INC	090dcu-img
INC	090dcu-inc
INC	090dcu-obj
INC	090dcu-prc
INC	090dcu-uib

090RY



R Roundtable Workspace Sources - dyn-dev

File Help

Workspace Sources

Workspace ID: dyn-dev

Source Workspace: 090dyn-dep

Product: 090RY

Status	Source Workspace	Product
INC	090dyn-dep	090AF
INC	090dyn-dep	090DB
INC	090dyn-dep	090DCU
INC	090dyn-dep	090DLC
INC	090dyn-dep	090DLCDB
INC	090dyn-dep	090ICF
INC	090dyn-dep	090RTB
INC	090dyn-dep	090RY
INC	090dyn-dep	090S2K

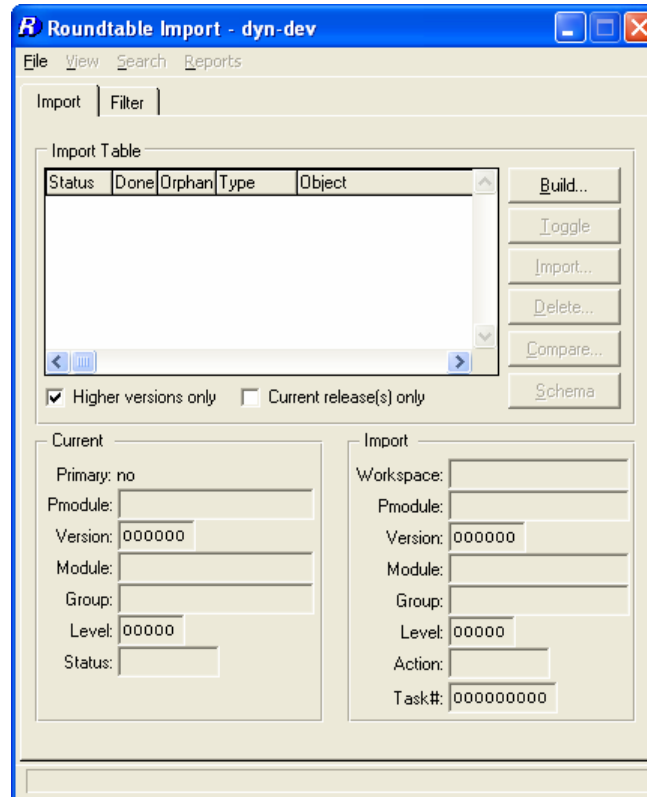
Product Modules

Status	Pmodule
INC	090ry-aaa
INC	090ry-app
INC	090ry-clc
INC	090ry-dfo
INC	090ry-dhtml
INC	090ry-img
INC	090ry-inc
INC	090ry-obj
INC	090ry-prc
INC	090ry-tem
INC	090ry-uib

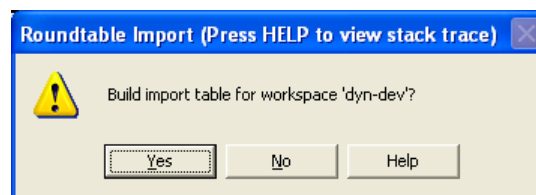
3.2.4.3 Importing

Before starting to import the Dynamics 2.1B release into your workspace, make sure that all tasks with customized objects from the Dynamics framework or Roundtable Dynamics integration are completed and that these objects are checked in.

1. Select Workspace → Workspace Import

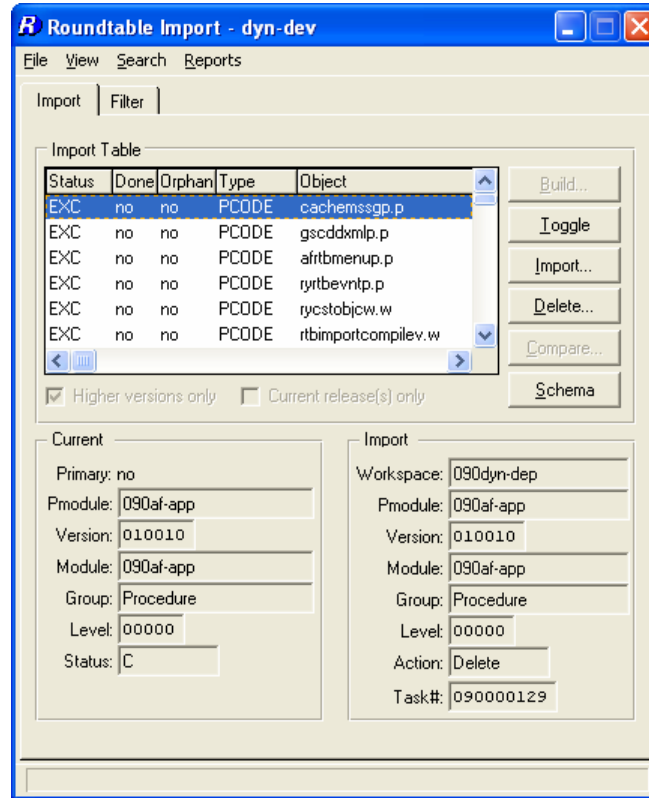


2. Select **Build** to build an import control table.

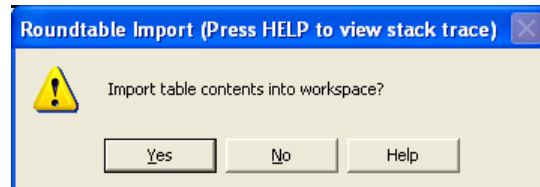


- Review the contents of the import control table. Especially check the objects with a status of EXC. These will mostly be objects that are to be deleted as part of the import. They may also be objects that have been customized so that custom variant objects exist in the target workspace.

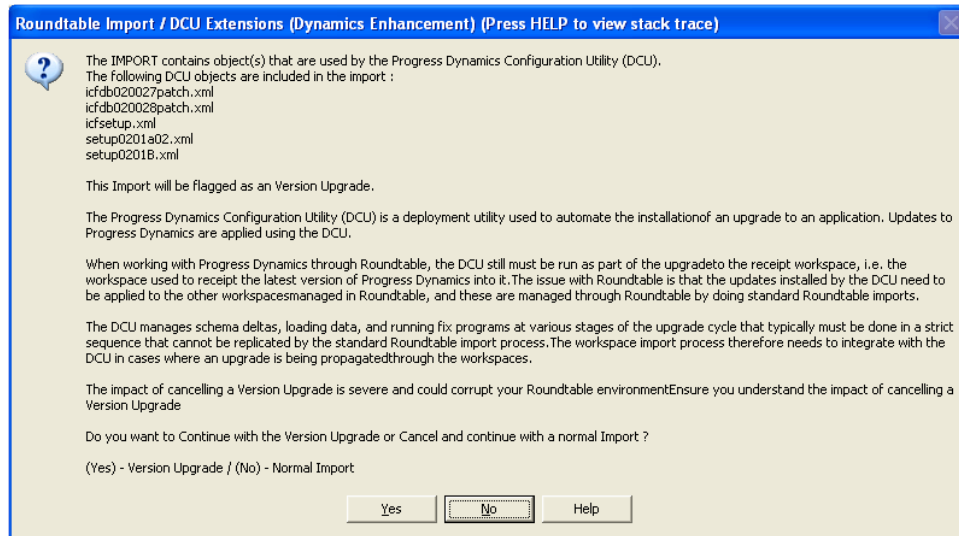
NOTE: Custom variant objects, such as *ryrtbevntp.p*, must be checked in if they are to be overwritten by the import process. Changing the status from EXC to INC for an object that is WIP will result in the import process being interrupted when Roundtable attempts to import this object.



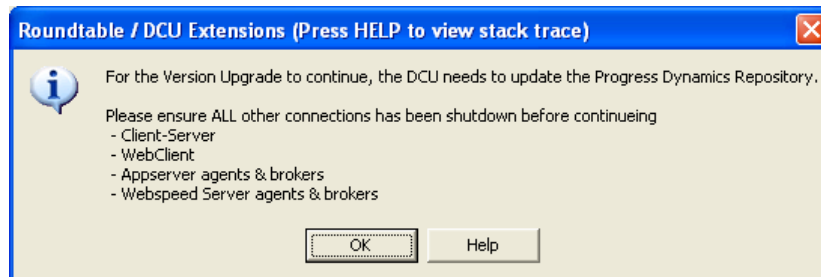
- Once all of the objects to be imported have a status of INC. Press the **Import** button and select **yes** to perform the import.



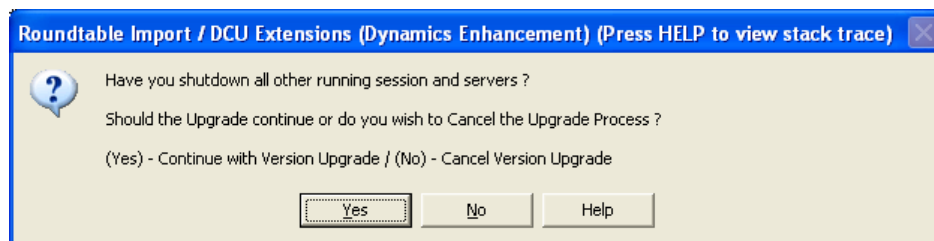
5. If the import process is to be extended with DCU processing to upgrade the workspace ICFDB repository to Dynamics 2.1B, then answer **yes** to the following prompt. *It is recommended that the DCU run is included in the import processing.*



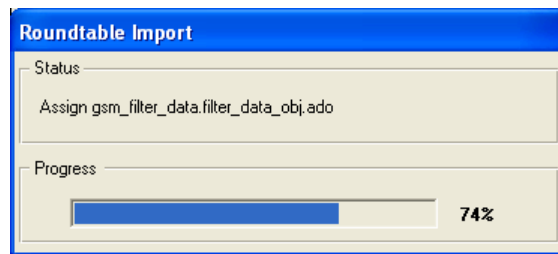
6. Select **OK**.



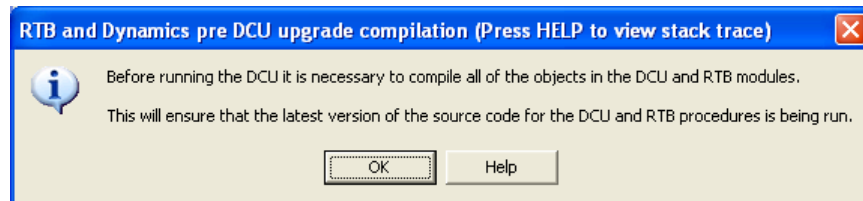
7. If all processes using the ICFDB repository have been shut down, so that they user doing the import has the only connection to the database, select **yes**.



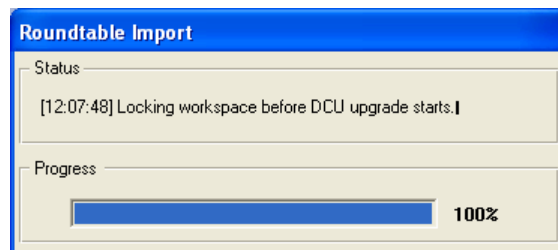
The import process is now started.



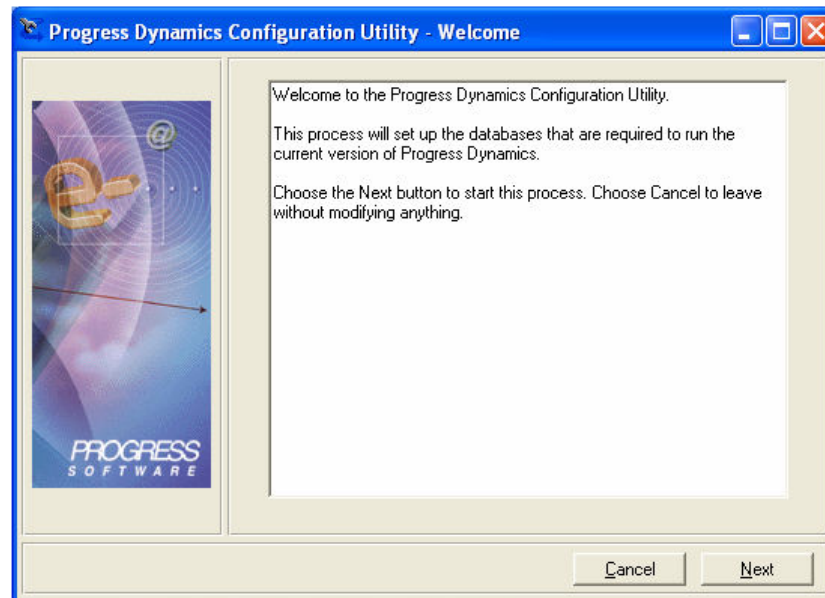
8. Once the import process is completed, the DCU and Roundtable objects have to be recompiled so that the DCU is started with up-to-date r-code. Select **OK**.



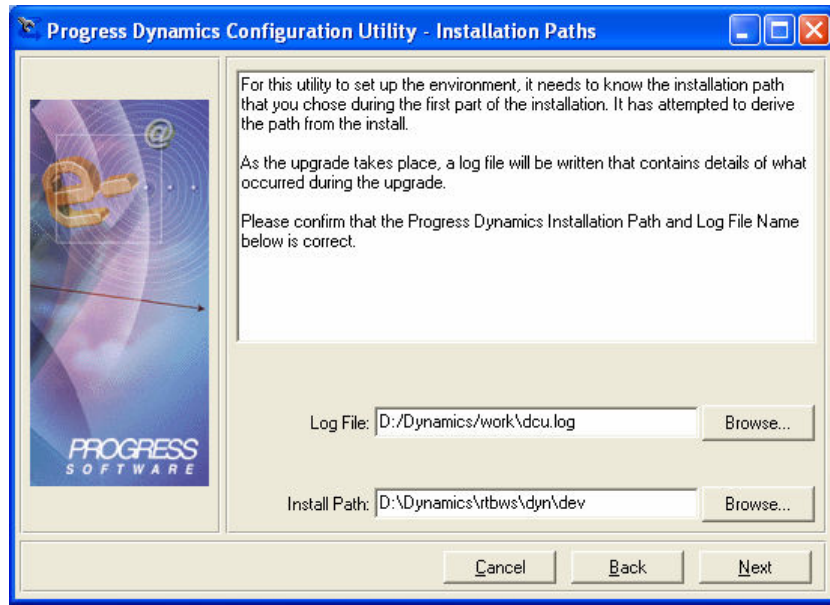
The following status screen can be seen during this processing.



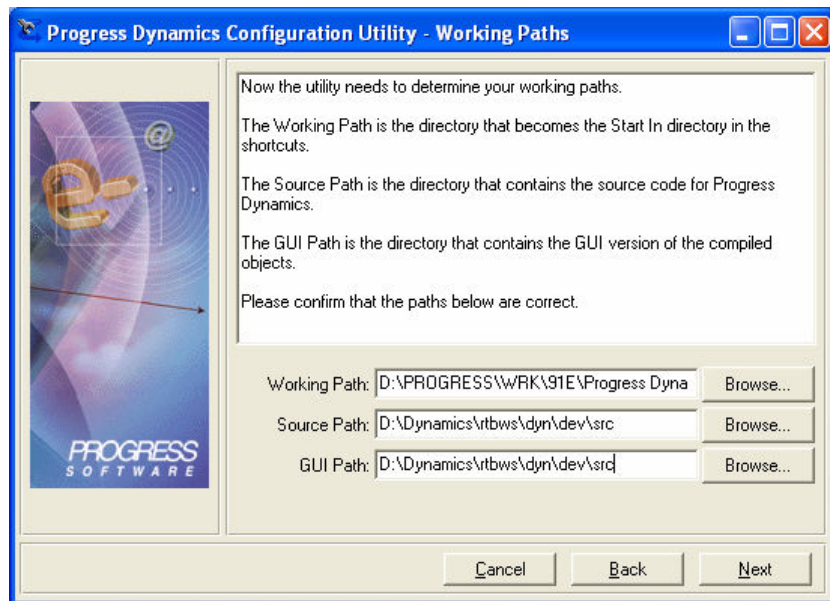
9. The DCU is now launched. Select **Next**.



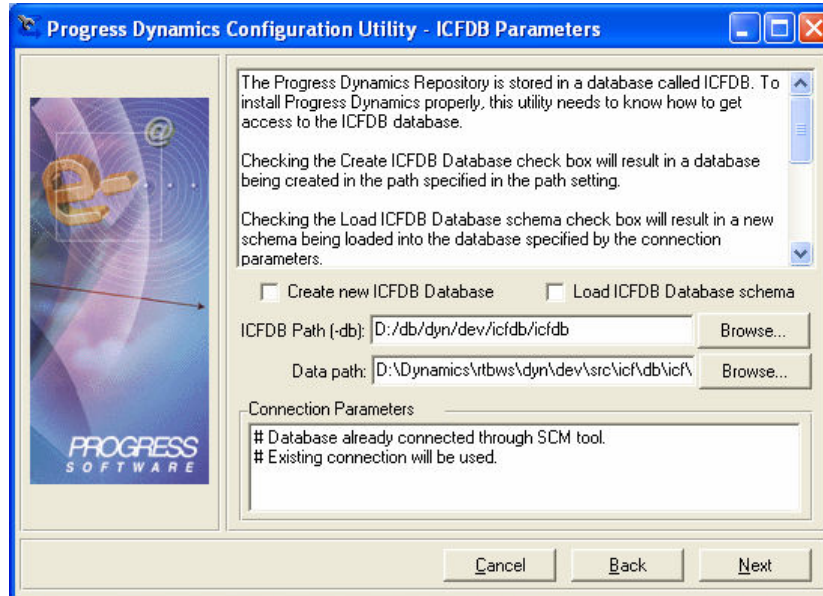
10. Change the **Install path** to be the **workspace root directory** (this is **not** done automatically) and select **Next**.



11. Change the **Source Path** and the **GUI Path** to the same. They must match the <workspace root directory>\src directory, as there is not <workspace root directory>\gui directory.

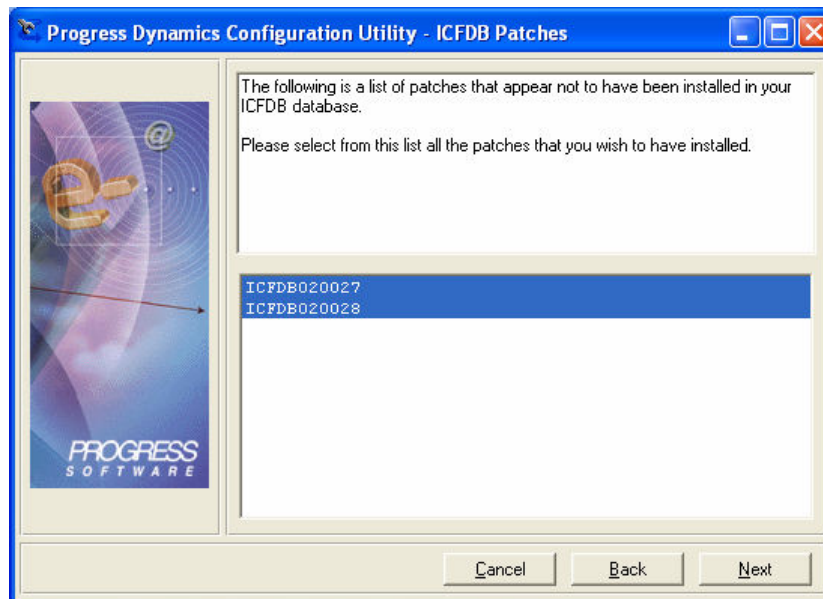


12. The database connection to the **ICFDB** database for the currently selected workspace is automatically picked up by the DCU. **Do not change this.**

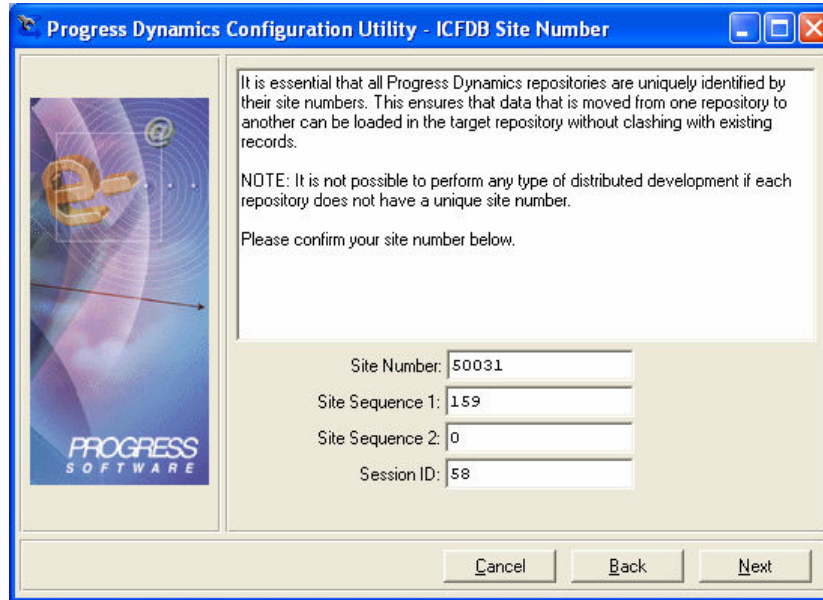


13. Verify that the updates to be applied are correct and select **next**.

An upgrade from Dynamics 2.1A03 to Dynamics 2.1B includes updates 020027 and 020028 to the ICFDB database.



14. Verify the site and sequence number settings for the ICFB database and select **next**.



The dialog box is titled "Progress Dynamics Configuration Utility - ICFDB Site Number". It features a logo on the left and a text area on the right. The text area contains the following information:

It is essential that all Progress Dynamics repositories are uniquely identified by their site numbers. This ensures that data that is moved from one repository to another can be loaded in the target repository without clashing with existing records.

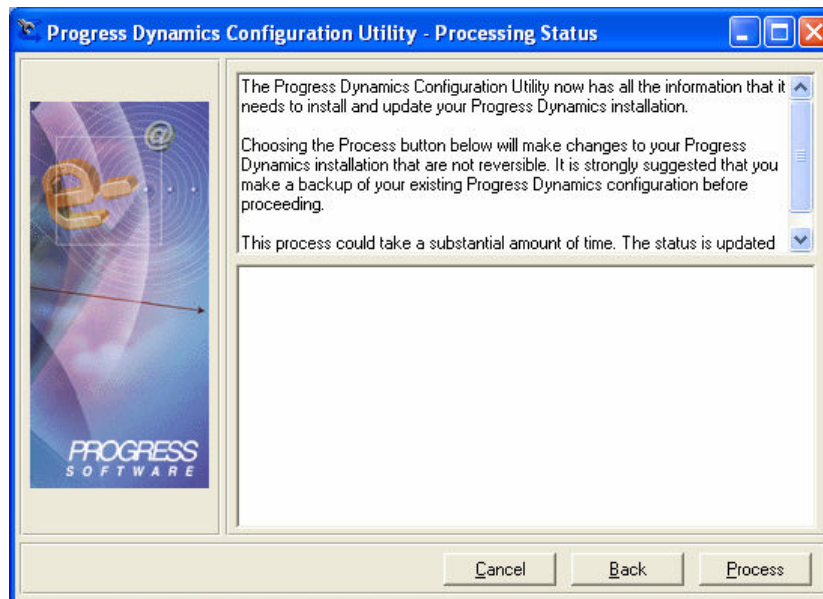
NOTE: It is not possible to perform any type of distributed development if each repository does not have a unique site number.

Please confirm your site number below.

Site Number: 50031
Site Sequence 1: 159
Site Sequence 2: 0
Session ID: 58

At the bottom, there are three buttons: "Cancel", "Back", and "Next".

15. Select **process** to start the database update.



The dialog box is titled "Progress Dynamics Configuration Utility - Processing Status". It features a logo on the left and a text area on the right. The text area contains the following information:

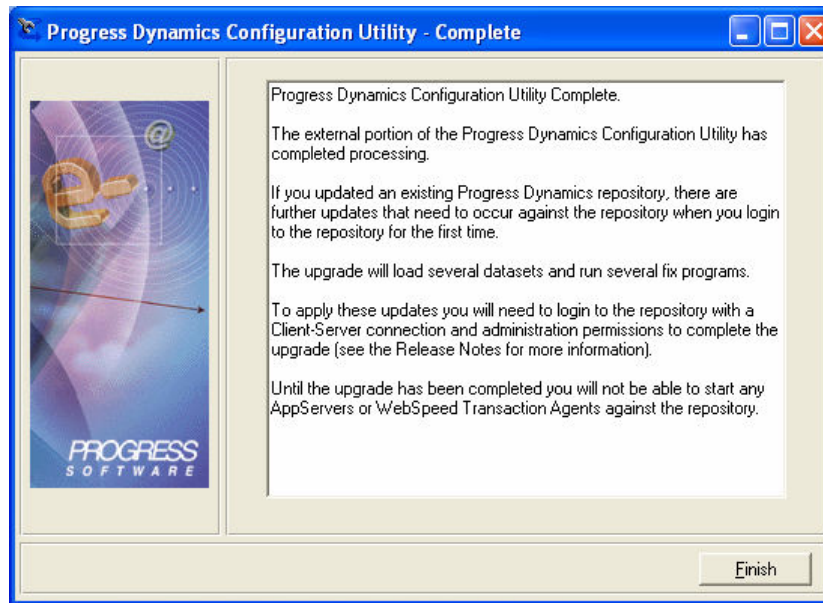
The Progress Dynamics Configuration Utility now has all the information that it needs to install and update your Progress Dynamics installation.

Choosing the Process button below will make changes to your Progress Dynamics installation that are not reversible. It is strongly suggested that you make a backup of your existing Progress Dynamics configuration before proceeding.

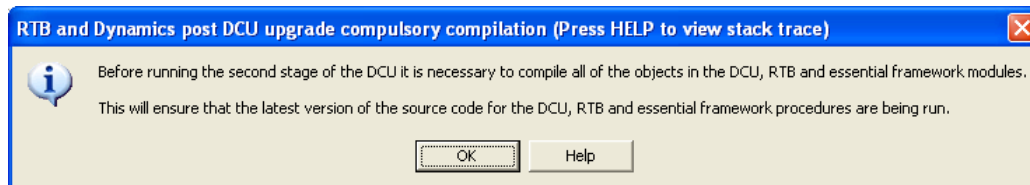
This process could take a substantial amount of time. The status is updated

At the bottom, there are three buttons: "Cancel", "Back", and "Process".

16. Select **Finish**.



17. Select **OK** to the information message about objects being compiled before the second stage of the DCU is started.



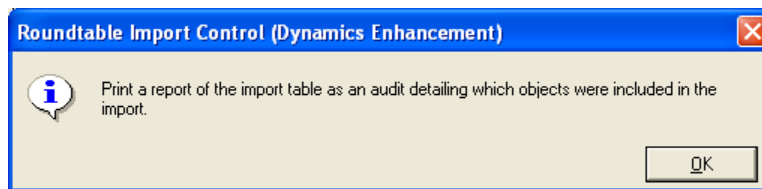
18. When the compiles are completed, login to the Dynamics framework as the admin user.



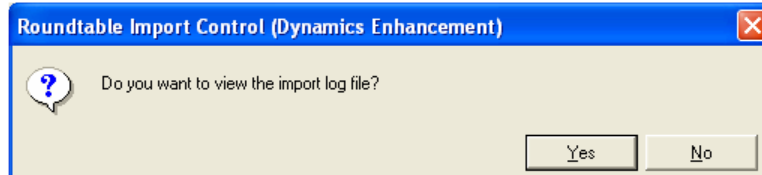
This will start the processing for the 2nd stage of the DCU, which includes loading new and changed .ado files.

If there are no errors during the ado load, the workspace has been updated to Dynamics 2.1B.

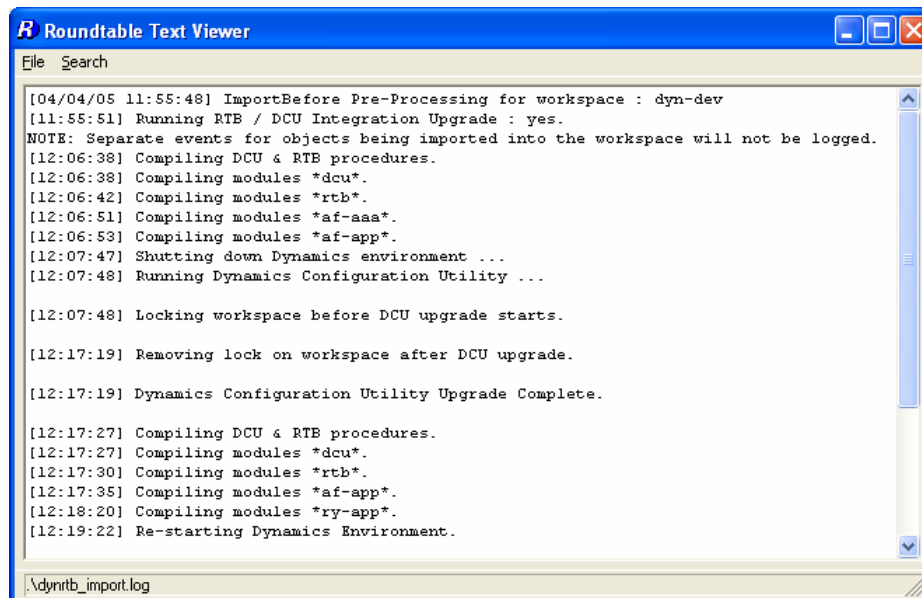
19. The import processing is now complete. Select **OK**.



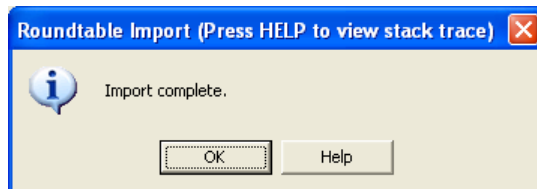
20. If you wish to see the contents of the extended import log file created during the import process, select **yes**.



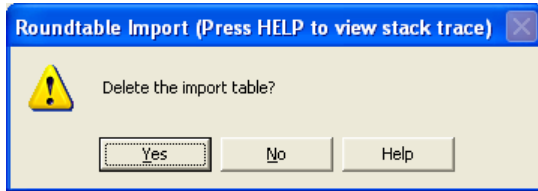
This launches the Roundtable text viewer with the log file open.



21. Press **OK**.

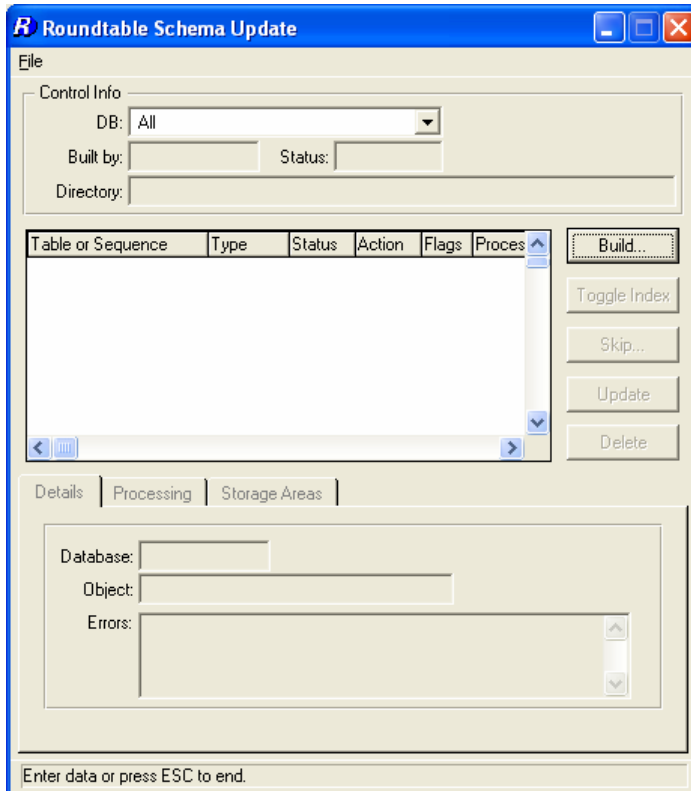


22. Delete the import table by pressing the **delete** button and answering **yes** to the next prompt.

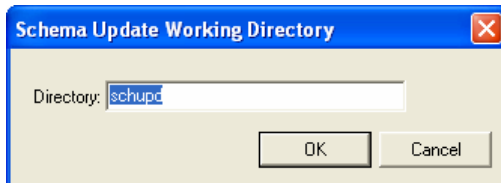


23. The status of the newly imported schema objects have to be updated using the Schema Update Process.

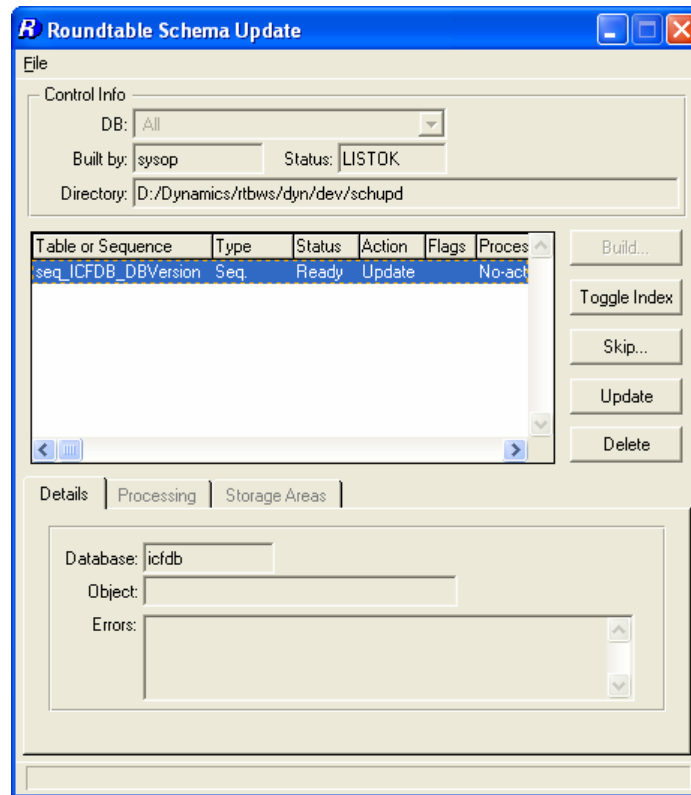
Select **Workspace** → **Update Schema** and select the **Build** button.



24. Leave the schema update directory with the default settings and press **OK**.

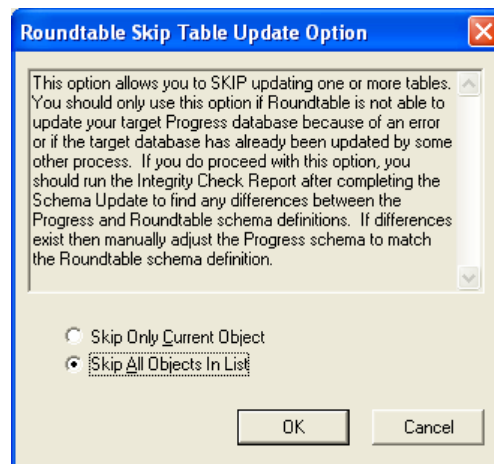


25. Leave the schema update directory with the default settings and press **OK**.

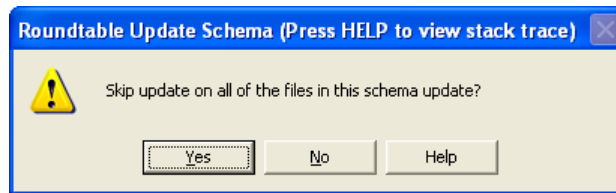


26. Press the **Skip** button.

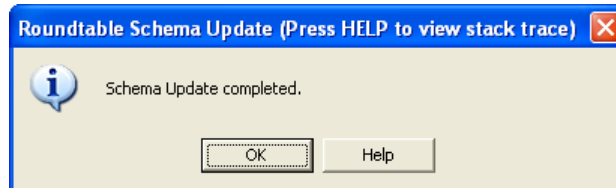
27. Press the **Skip All Object in List** and press **OK**.



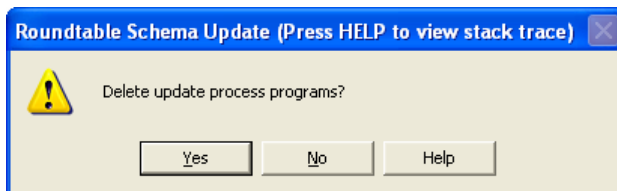
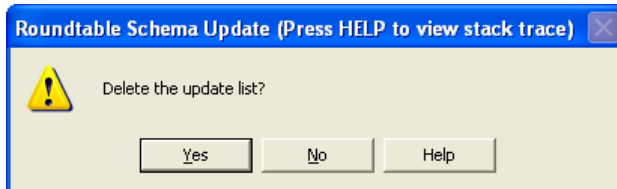
28. Select **yes**.



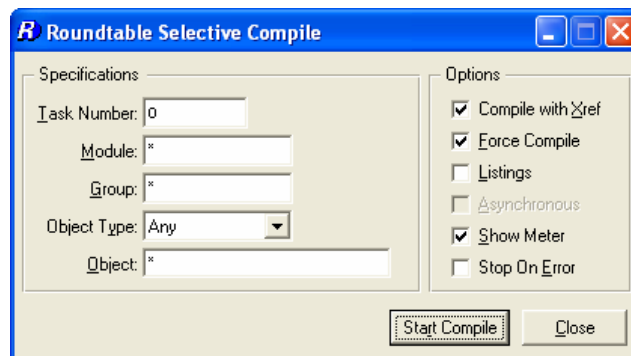
29. Select **update** and press **OK** when done to complete the processing.



30. **Delete** the contents of the schema update table and process programs.



31. Perform a full forced selective compile on the workspace to make sure that all of the updated objects and affected objects are updated correctly.



The workspace has now been completely upgraded to Dynamics 2.1B.

4 Appendix A: New Roundtable definitions

A number of new product modules and Code Subtype definitions have been added to the repository for this release. They are described in more detail in the following sections.

4.1 New product modules

The table below shows the new product modules that have been added to the central Roundtable Dynamics repository (090).

Product Module	Workspace Module	Description	Directory
090dcu-aaa	090dcu-aaa	090 DCU Root Module	src/icf/install
090ry-aaa	090ry-aaa	090 RY Root Module	src/icf/ry
090scmrtb-adeuib	090scmrtb-adeuib	090 SCM Custom rtb/adeuib Module	Src/icf/scm/custom/rtb/adeuib

NOTE:

These product modules have not been added to the ICFDB for this release. As the objects that are contained in these modules are not registered in ICFDB, this should not pose any problems for this release.

The objects loaded into the 090dcu-aa and 090ry-aaa modules belong to object types that are not registered in ICFDB.

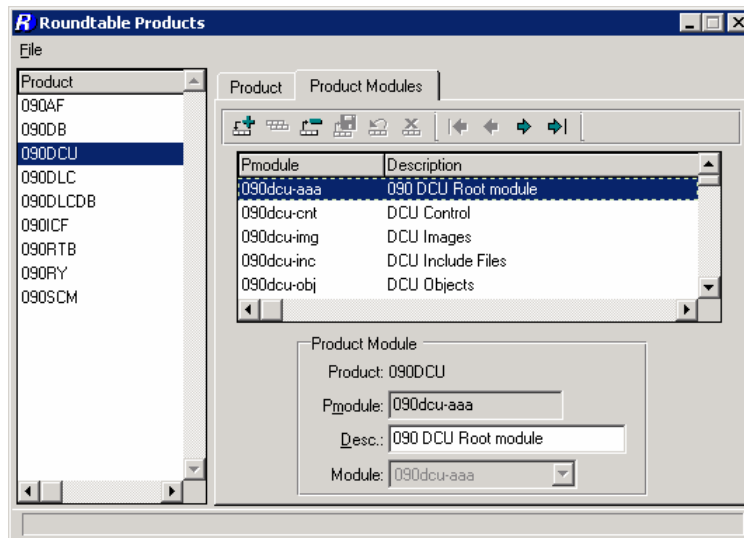


Figure 1 : New 090dcu-aaa product module

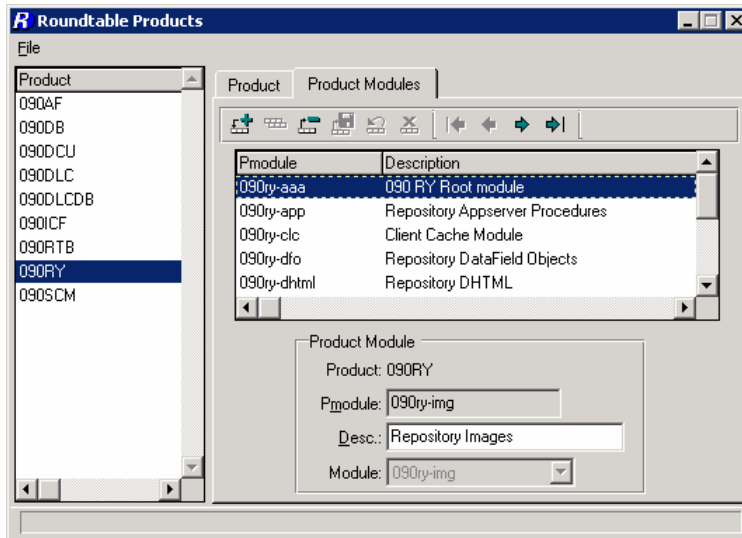


Figure 2 : New 090ry-aaa product module

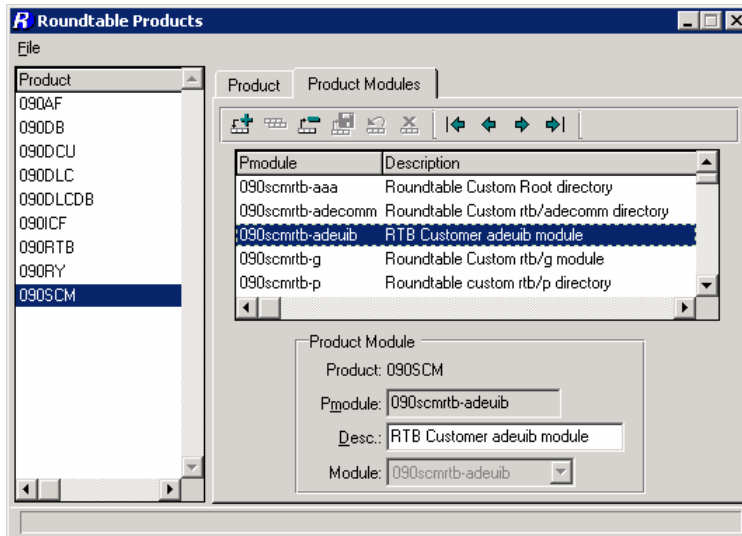


Figure 3 : New 090scmtb-adeuib product module

4.2 New Code Subtypes

The following new Code Subtype has been added to the central repository:

DataSet – this has been added to provide better support Dynamics Deployment DataSets. The screen shots below show the attributes for this code subtype.

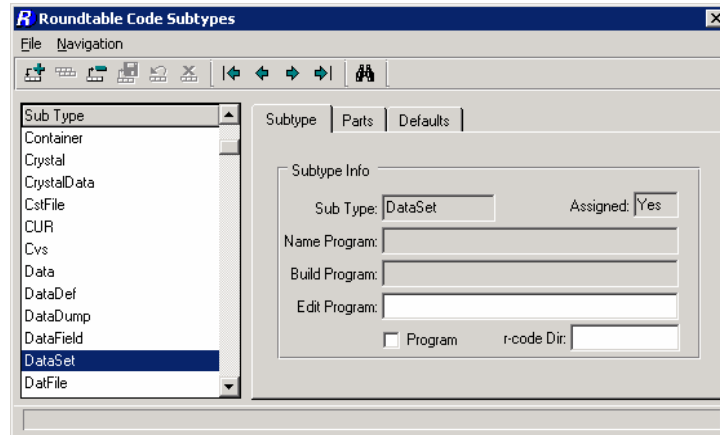


Figure 4 : New DataSet Code Subtype

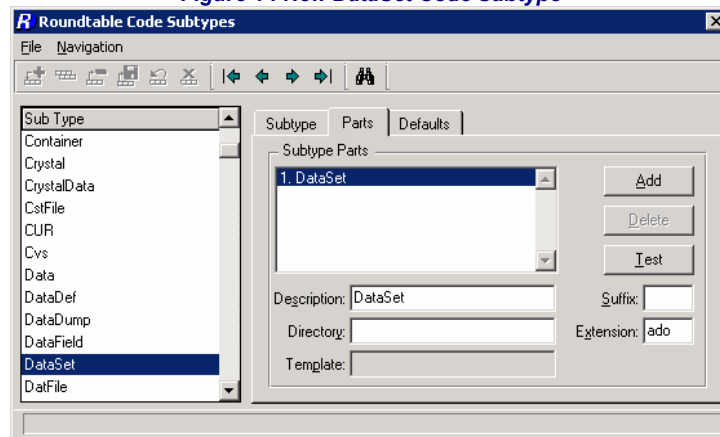


Figure 5 : New DataSet Code Subtype - parts definition

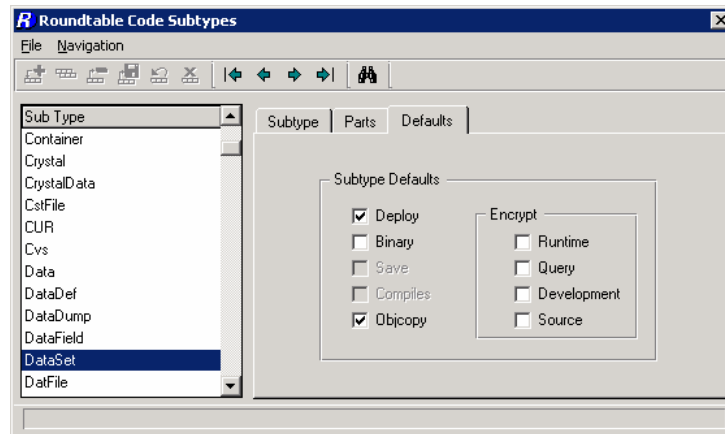


Figure 6 New DataSet Code Subtype – subtype defaults

Figure 7 : New DataSet Code Subtype - parts definition

All of the existing dataset objects (e.g. gscdd.ado) have had their code subtypes changed from “*LSmartObject*” to “*DataSet*”. This should be visible in the Roundtable workspaces once they have been upgraded to Dynamics 2.1B.

5 Technical Support

5.1 Dynamics Support

Issues with core Dynamics functionality and upgrading Dynamics repositories or code, which do not have anything to do with the use of Roundtable and Dynamics should be directed to Progress Software Corporation’s Technical Support.

<http://www.progress.com/support>

5.2 Roundtable Dynamics Support

The Roundtable Dynamics integration using Roundtable 9.1D05 or higher and Dynamics 2.1A03 or higher is now supported by Roundtable Technical Support.

The following kinds of issues can be directed to Roundtable Technical Support:

Issues related to the use of the core Roundtable product

Issues related to the use of the Roundtable Dynamics integration

Enhancement requests to Roundtable or the Roundtable Dynamics integration

Contact details for Roundtable Technical Support can be found at:

<http://www.roundtable-tsms.com/support>.